



European demands on IPM:

The current state of the sugar beet crop in the Netherlands

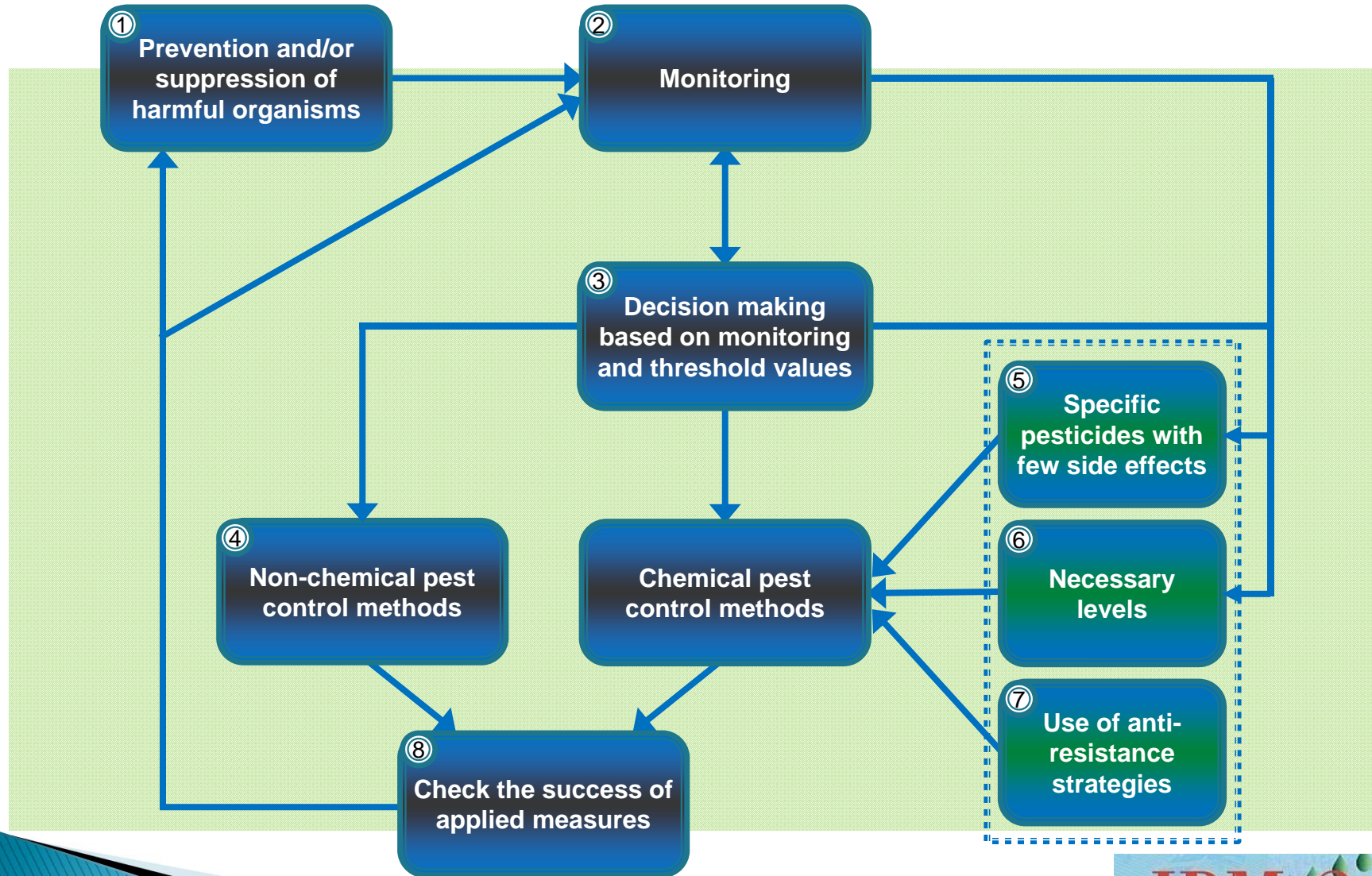
Martijn Pepping



e-mail: pepping@irs.nl
<http://www.irs.nl>



General principles of IPM



1. Prevention and/or suppression of harmful organisms

1a. Crop rotation

prevent problems with:

- ▶ rhizoctonia (*R. solani*)
- ▶ nematodes
- ▶ *Verticillium dahliae*
- ▶ weeds



rhizoctonia root rot

1b. Green manure crops

prevent problems with:

- ▶ rhizoctonia (*R. solani*)
- ▶ nematodes
- ▶ (weeds)

by growing (resistant) varieties of:

- ▶ oilseed radish (*Raphanus sativus* subsp. *Oleiferus*)
- ▶ white mustard (*Sinapis alba*)



oilseed radish

1c. Resistant/tolerant cultivars

reduce damage from:

- ▶ rhizomania (BNYVV)
- ▶ rhizoctonia (*R. solani*)
- ▶ beet cyst nematodes (*Heterodera schachtii* and *H. betae*)



rhizoctonia cultivar testing

2. Monitoring

2a. Soil sampling

- ▶ beet cyst nematodes (*H. schachtii* and *H. betae*)
- ▶ other nematodes
- ▶ leatherjackets (larva of the crane fly, *Tipulidae*)
- ▶ soil nutrient status



2b. Field monitoring

- ▶ weeds (stage and species)
- ▶ aphids (*Myzus persicae* and *Aphis fabae*)
- ▶ beet leaf miner (*Pegomya betae*)
- ▶ foliar diseases



Larva of gall midge

3. Decision making based on monitoring and threshold values

3a. Threshold values

▶ nematodes

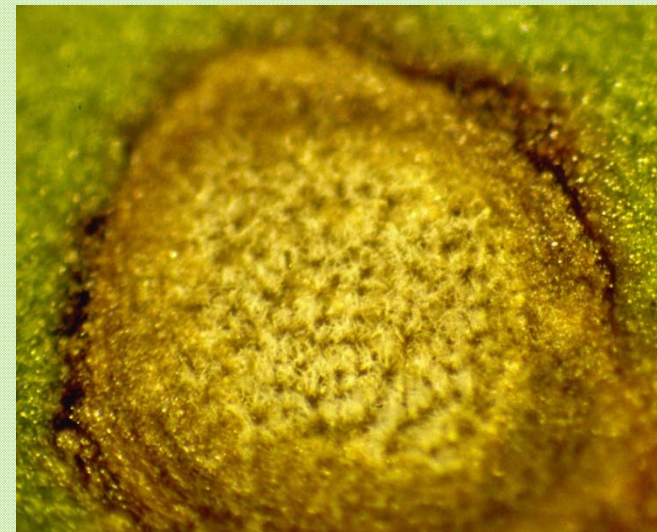
- beet cyst nematode (*H. schachtii* and *H. betae*)
- root knot nematode
- free living nematode

▶ several insect species

- green peach aphid (*M. persicae*)
- black bean aphid (*A. fabae*)
- beet leaf miner (*P. betae*)

▶ foliar diseases

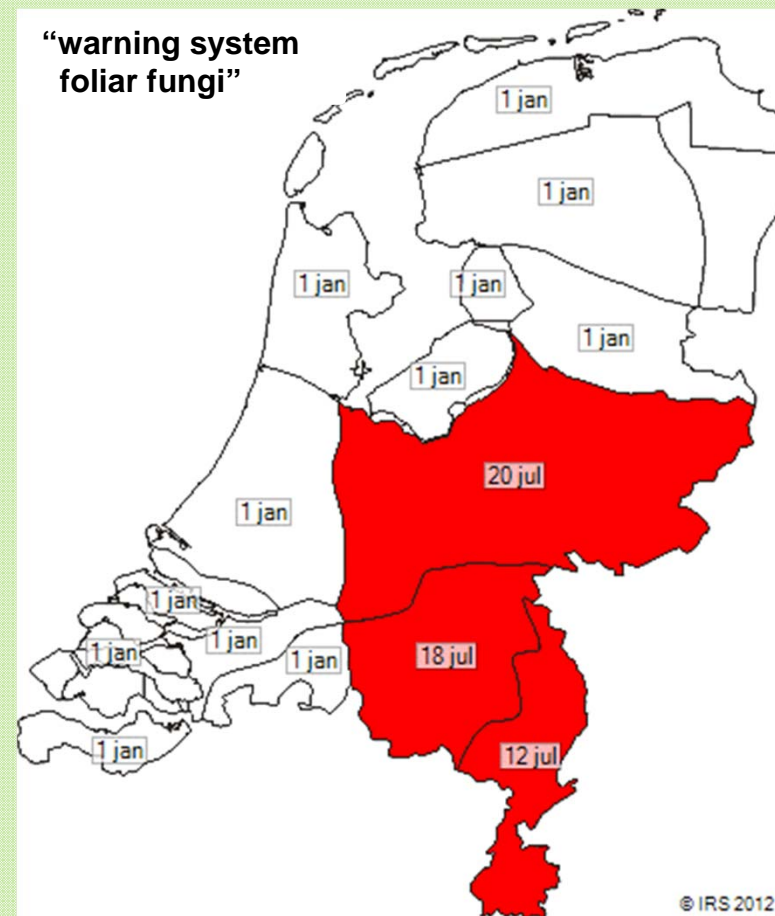
- cercospora leaf spot (*Cercospora beticola*)



cercospora spot

3b. Online decision support tools

- ▶ weed identification
- ▶ herbicide combinations
- ▶ cultivar choice
- ▶ necessity of liming
- ▶ warning system for foliar diseases



4. Non-chemical pest control



Mechanical weeding

5. Environmental calculation tool for pesticide use

- ▶ developed by Dutch consultancy CLM
- ▶ risks for beneficial organisms included
- ▶ environmental values included in our advices

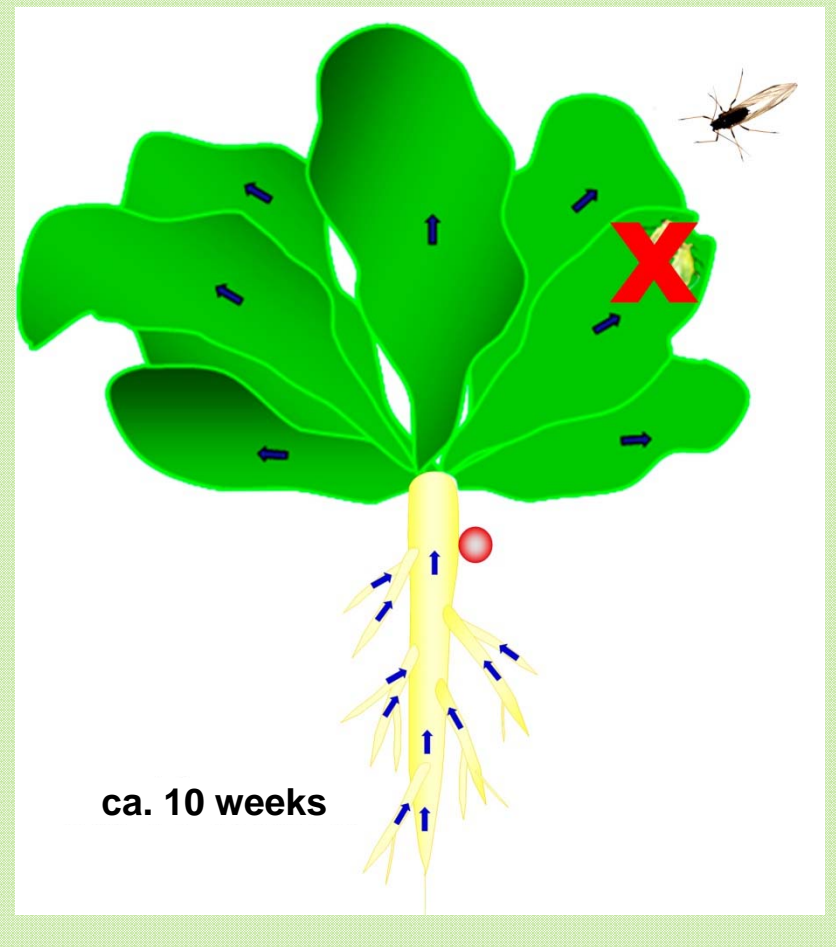
Input		Output – environmental effects			
Pesticide	Dose (kg/ha of l/ha)	Active matter (kg/ha)	EIP water life	EIP ground life	EIP ground water
PERFEKTHION	0.25	0.10	0	16	0
PIRIMOR	0.40	0.20	44	212	1
CALYPSO	0.25	0.12	3	48	0

<http://www.milieumeetlat.nl/index.en>



6. Necessary levels

- ▶ weed control with Low Dosage System (LDS)
- ▶ insect control using seeds with insecticides

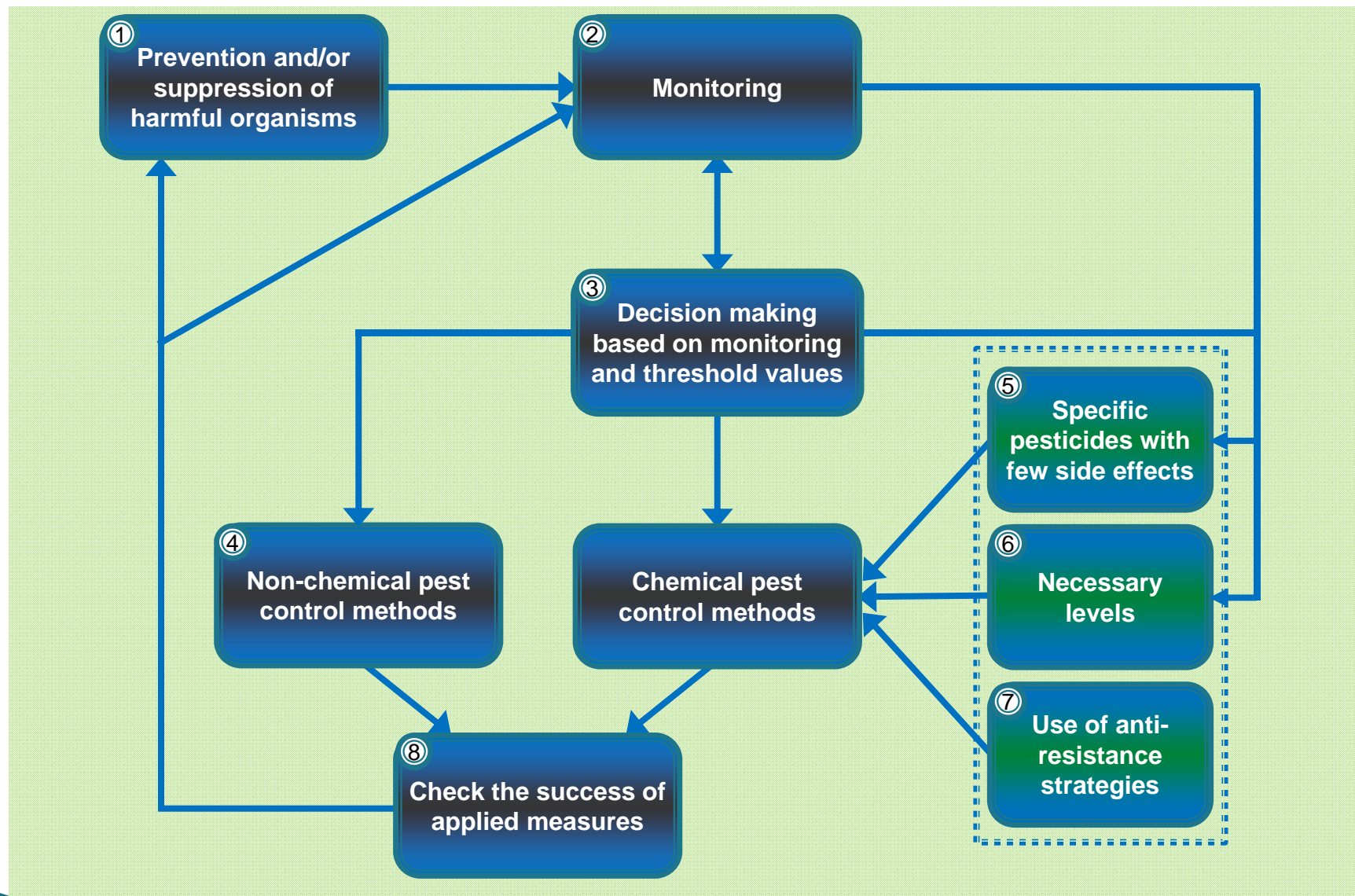


7. Anti-resistance strategies

- ▶ use pesticides with different mechanisms
- ▶ use pesticides when needed and only the necessary level
- ▶ complementary strategies
 - crop rotation
 - green manure crops
 - mechanical weed control

Further development

- ▶ already many integrated measures available
- ▶ development of database
- ▶ fill gaps in knowledge
- ▶ principles and measures integrated in cultivation guide for growers
- ▶ presentations and articles for growers and crop advisors
- ▶ integrated in certification



**Growing sugar beet is already
IPM-proof in many ways!**

